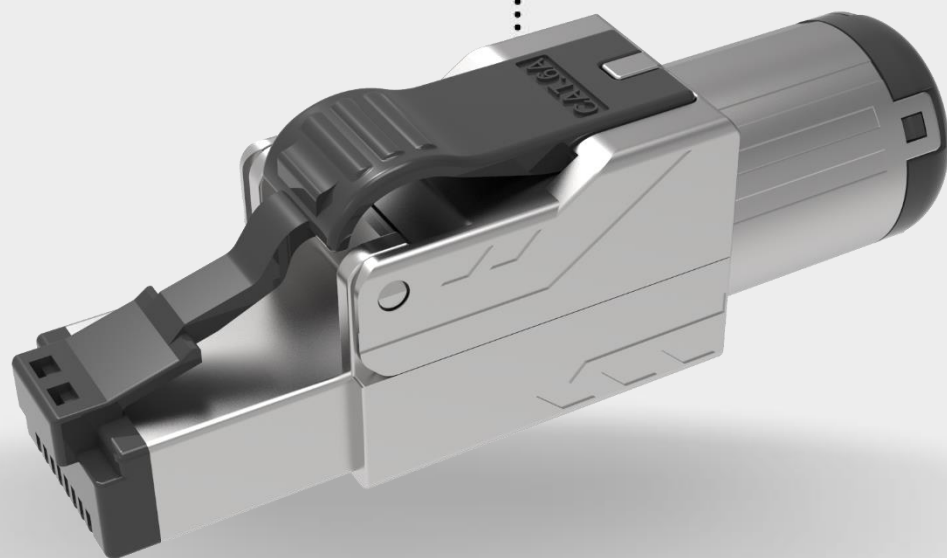


Various Color



Large OD Solution 10MM For Your Cable

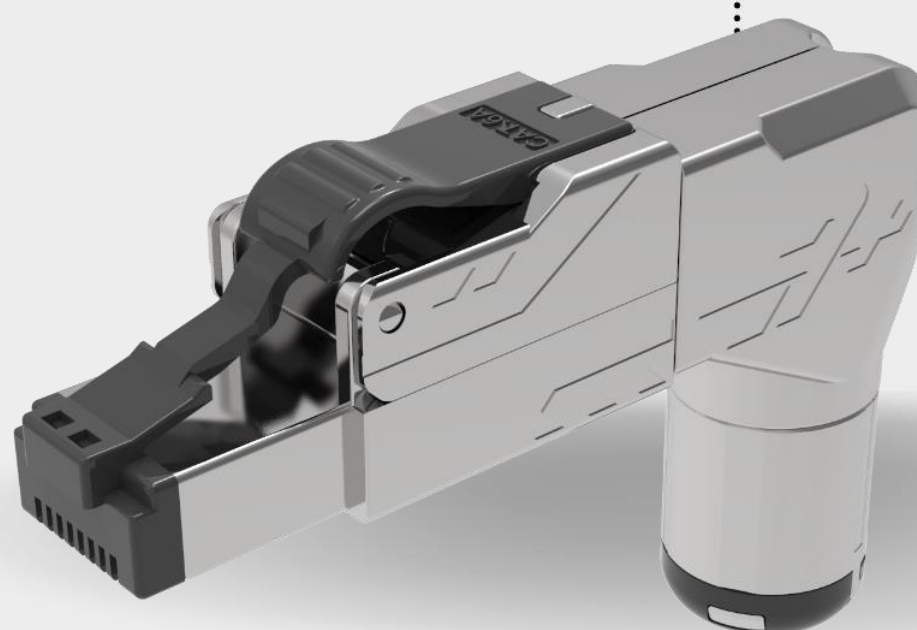
Long latch design is easy for
high density cabling system.



Five angled design

**This five directional design
meets all installation
application.**

Angled screw boots can be
added optionally



There is nothing like

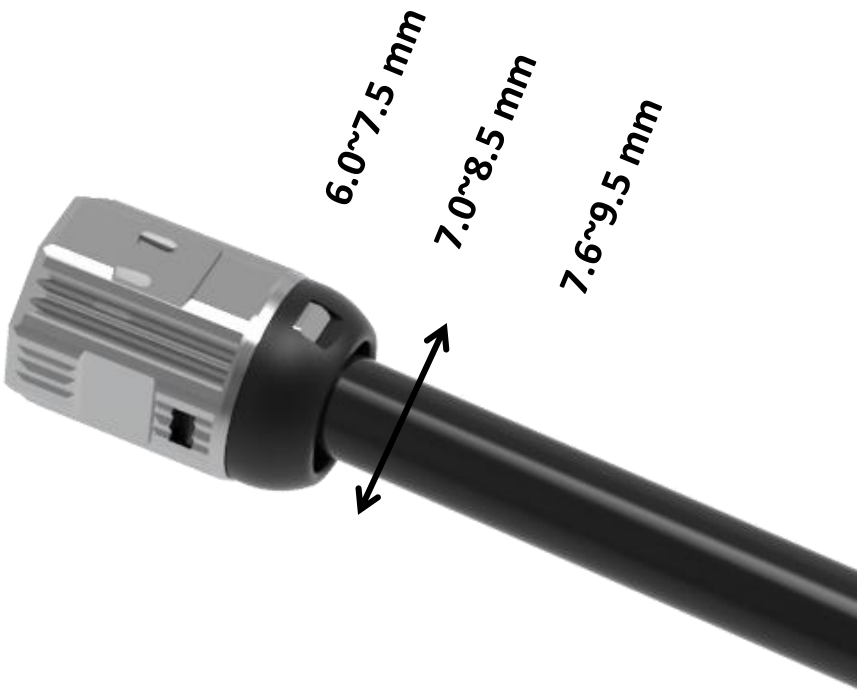
Larger cable solution : 22 To 26 AWG SFTP Cables/ Industrial Cables

The solid cable outer diameter information is usually stated on the cable specification. We offer three different OD RJ45 field termination plug models.

Model	Type	Cable OD	Suitable Cable
FT-DTPS6A-6075	Straight	6.0~7.5 mm	23-26 AWG
FT-DTPS6A-7085	Straight	7.0~8.5 mm	22-24 AWG
FT-DTPS6A-7695	Straight	7.6~9.5 mm	22-24 AWG Industrial Cable
FT-DTPA6A-6075	Angled	6.0~7.5 mm	23-26 AWG
FT-DTPA6A-7085	Angled	7.0~8.5 mm	22-24 AWG
FT-DTPA6A-7695	Angled	7.6~9.5 mm	22-24 AWG Industrial Cable

Three Size Cable Boot For Options

Suitable for larger OD cable, the screw boot could fit in three size, 6.0~7.5 mm , 7.0~8.5mm and 7.6~9.5 mm cable.

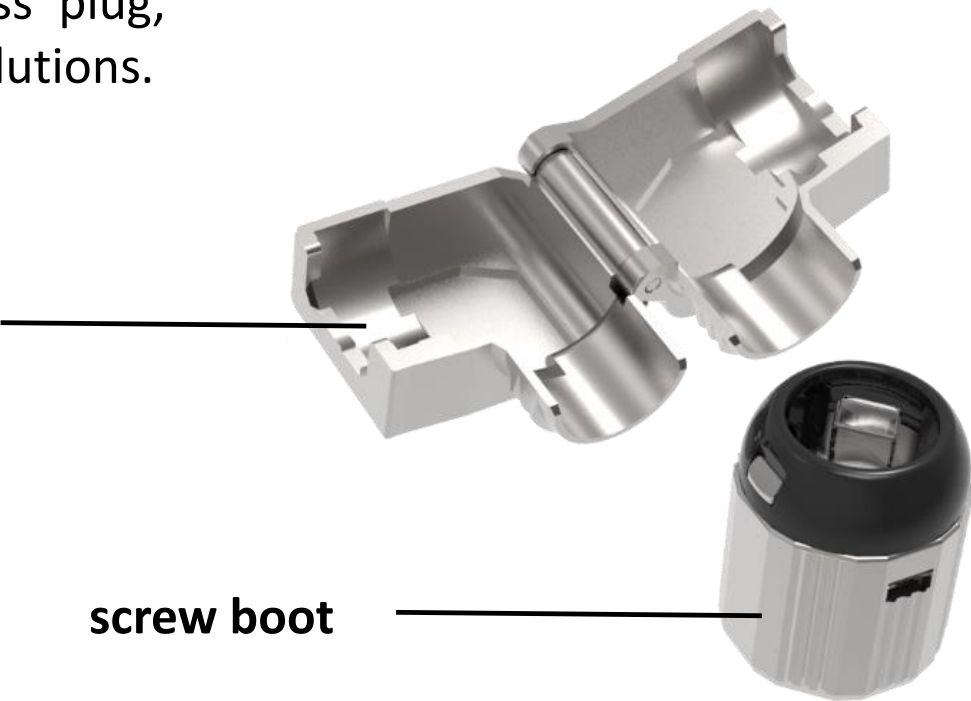


Optional Angled Screw Boot

The angled screw boot is an ideal solution for small-quantity orders to save stock. It's optional to use the toolless plug, which means you only need to buy one body for two solutions.



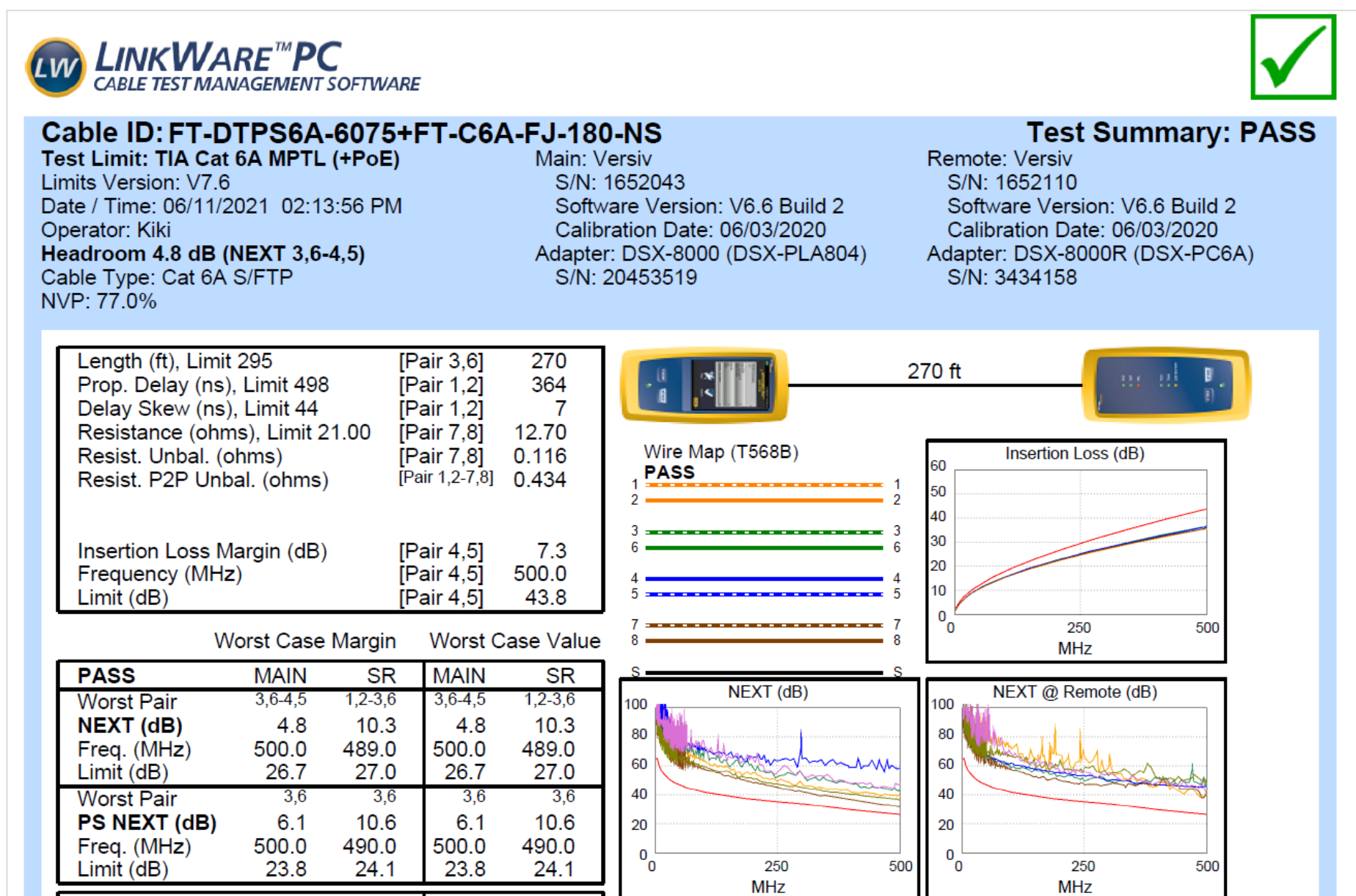
5-angled screw boot



screw boot

How's The Performance Of Tool-Free Rj45 Connector?

With PCB provides excellent characteristics, the Tool-free RJ45 connector can be used in the wiring link of the MPTL, bringing convenience and good transmission for users in field termination.

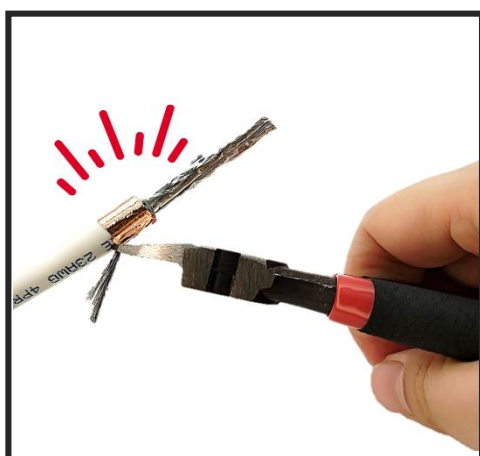


How To Assemble The Big OD Field Termination RJ45 Plug For Large Cable?

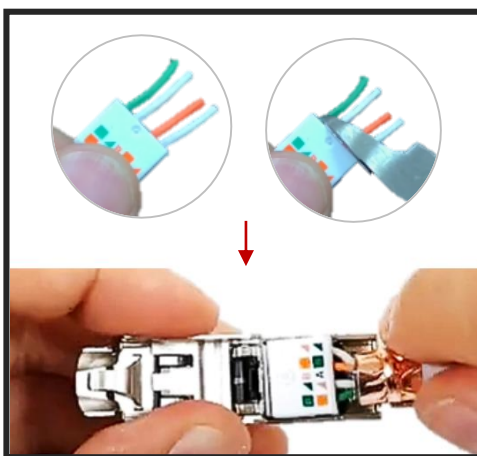
1. Put the screw boot into the cable and then peel off the outer jacket with stripper. After stripping off the outer jacket, carefully arrange the braid shielded around the cable.
2. Once the braid is in place, use copper foiled tape to fix it securely in place.
3. Sort out the aluminum foil layer and arrange the individual wires according to the T568A or T568B map indicated on the cap. Once the wires are arranged correctly, insert them into the cap and ensure they are fully seated. Then, use a cutter to trim any excess wire.
4. Plug the wire cap into the plug, and close the upper cap of the plug.
5. Put the angled part on and combine it with the plug body. (optional)
6. Screw the boot onto the plug to provide additional strain relief and protect the cable from damage.



Remove 3cm cable jacket



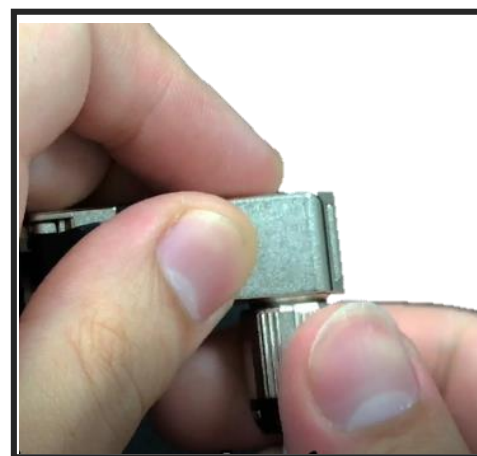
Fix braid with foiled tape



Arrange the wire and put into plug



Put angled part (Optional)



Screw & Completion!

Partner With Us & Let's Get Your Business Connected, Together !